



201 E. Randolph St., Chicago, IL 60601
LurieGarden.org • (312) 228-1004

May 21, 2018

Pollinators Explored in Lurie Garden's Free Summer Programming

Lurie Garden's Free Summer Program Lineup includes lectures by four experts in their respective fields, all of whom work with pollinators as well as additional programming aimed just for the younger crowd.

On June 14, urban beekeepers, Michael Thomson (Chicago Honey Co-op) and Jana Kinsman (Bike-A-Bee) will discuss how trees, not ordinarily thought of as an important tool for helping pollinators, are helping pollinators traverse Chicago.

Heather Holm, author of the award-winning "Bees: An Identification and Native Plant Forage Guide", will discuss the clever engineering of flowers that entice, direct, and let's be honest, outright manipulate pollinators into helping them execute world domination. Heather will be lecturing at the Chicago Cultural Center on July 19, 1-3pm.

For those who learn by doing, scientists from the Nature Conservancy will be leading a walk around Lurie Garden on August 17 pointing out pollinators at work and (gently) snatching them up for a closer look. This is the kind of walk that opens one's eyes to see just how busy the garden is with working pollinators.

Additional programs focused on pollinators appropriate for all ages include Lurie Garden's Sunday Science series - microscopes are dusted off to get a closer look at flowers, insects, spiders. Not to forget the bigger pollinators, birds, and bats get their spotlight too. Bat biologists from Incredible Bats will be showing off some fuzzy flying mammals and the final Sunday Science event will cover birds as they collect seeds from the garden on their way south.

More information about these and other free Lurie Garden Programs at luriegarden.org/programs.

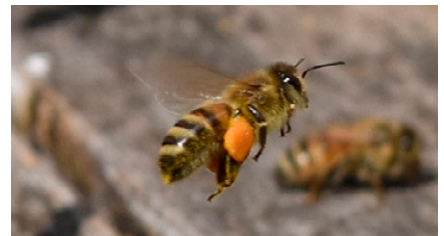
Assets for this release can be downloaded here: <http://bit.ly/2KGM5L3>

Web version of this release can be found here: <http://bit.ly/2wZzWib>

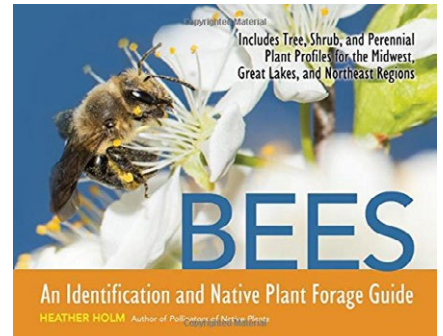
Lurie Garden is a beautiful urban garden designed to invite community members and visitors to experience, enjoy, and learn about nature. The garden is maintained in an ecological-friendly manner in order to provide the maximum benefit to wildlife and act as a model of green space management. Lurie Garden, located in the southeast corner of Millennium Park.

Media Contact:

Jo ana Kubiak
joana@luriegarden.org
(312)-547-9537



Honeybee brings pollen & nectar back to the hive.



Author Heather Holm's will be speaking on July 19.



Flies can be pollinators too!